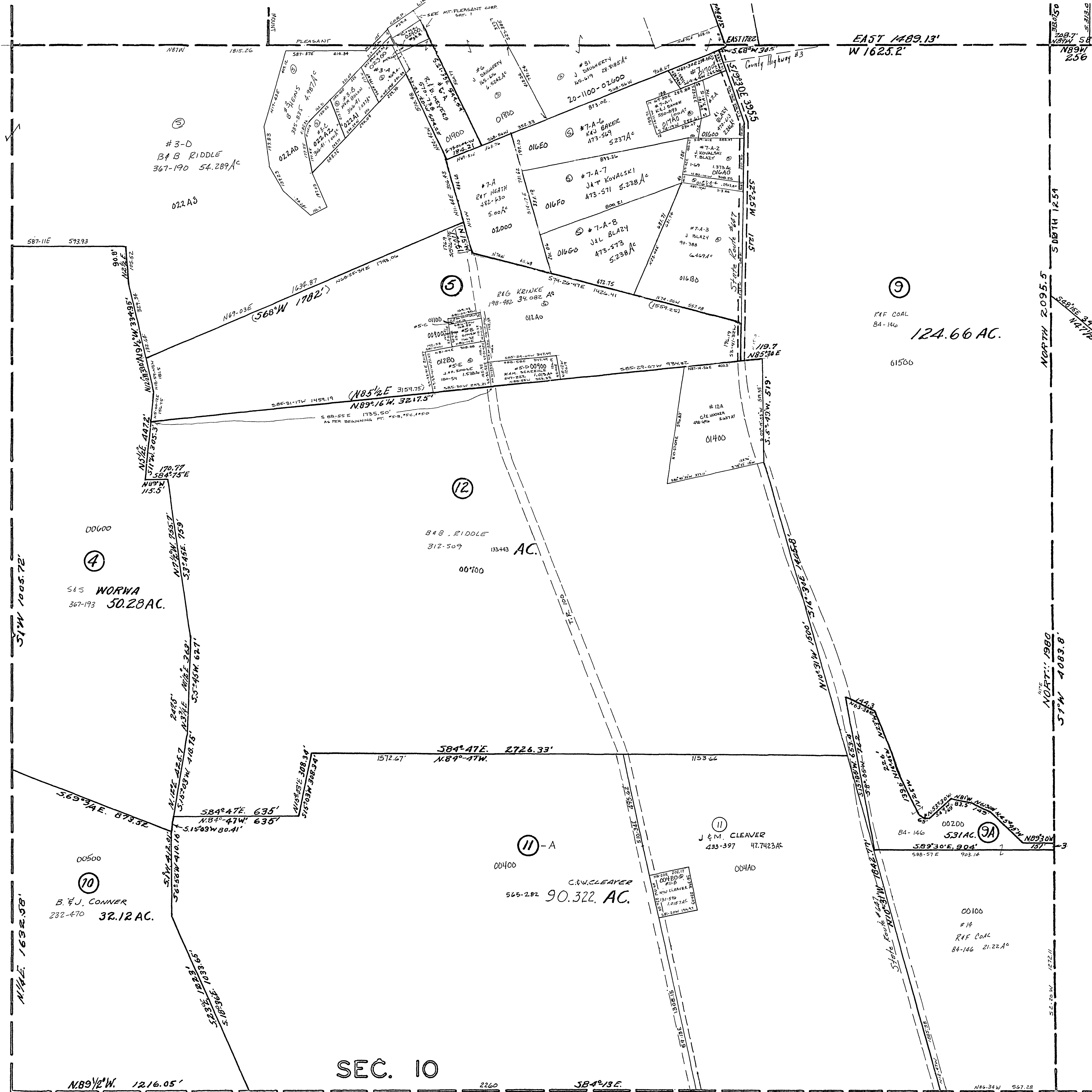


20-1000-

#3-A R.K. KRINKE TA 93-625 0.969A<sup>c</sup>  
 #5-B R.G. KRINKE 371-241 0.445 AC  
 #5-C R.H.G. KRINKE 425-338 0.1165A<sup>c</sup>  
 #7 M. RONEVICH 25-50 .626A<sup>c</sup>

#7-A-4 JAT KOVALSKI 90-390 0.2923A<sup>c</sup>  
 #7-A-5 KAJ BAKER 473-517 0.192A<sup>c</sup>



SEC. 10

MT. PLEASANT TWP.  
 SECTION 10, T.7, R.3.  
 SCALE: 1"=200'